

Stampin' Up! Stampin Blends Wood Stamp Case Insert

Cutting Instructions

- Print the Wood Stamp Case Inserts on standard white printer paper.
- Trim to the guild lines closest to the image.
- *each printer might adjust size of print out so adjust accordingly*
 - Place in Stampin Trimmer with "A" correctly positioned.
 - Place left side of paper at 7 3/8", cut
 - Turn paper 90 degrees to the left, so your just cut edge is at the top
 - Place left side of paper at 9", cut
 - Turn paper 90 degrees to the left, so your just cut edge is at the top
 - Place left side of paper at 6 1/4", cut
 - Turn paper 90 degrees to the left, so your just cut edge is at the top
 - Place left side of paper at 7", cut
 - Place paper in Score Board with the words "Stampin Blends" at the top correctly positions to read left to right
 - Score at 1 1/8"
 - Fold score line
 - Insert into Wood Stamp Case.

A



Stampin Blends

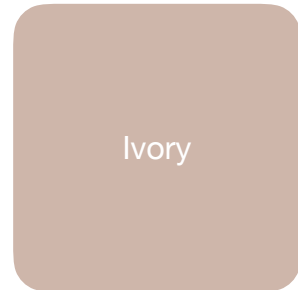
Stampin Blends



Bermuda Bay



Pumpkin Pie



Ivory



Daffodil Delight



Night of Navy



Bronze



Old Olive



Cherry Cobbler



CraftyStampin.com

Linda Cullen, Independent Stampin' Up Demonstrator

A



Stampin Blends

Stampin Blends



Pool Party



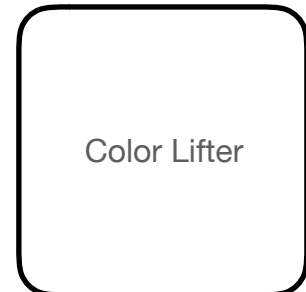
Crumb Cake



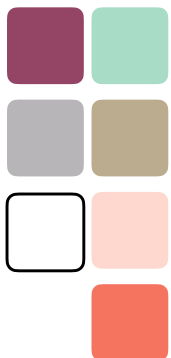
Pink Pirouette



Calypso Coral



Color Lifter



Rich Razzleberry



Smoky Slate

CraftyStampin.com

Linda Cullen, Independent Stampin' Up Demonstrator