

Hey Sports Fan Treat Box

Linda Cullen
linda@craftystampin.com
CraftyStampin.com



There are 2 ways to create these super cute treat boxes. You can create the card base with card stock, then add the ticket die cut to the front and back. Or you can create the box with designer series paper.

MEASUREMENTS:

- Box Base (card stock or designer paper): 6" x 4"
Score on short side: 1/2"
Score on the long side: 2" x 2-1/2", 4-1/2" & 5"

CARD INSTRUCTIONS:

- Cut slits on the score lines up to the 1/2" score along the bottom.
- Assemble the box with adhesive.
- Cut 2 ticket die cuts from the front and back and decorate.

Hey Sports Fan Treat Box

Linda Cullen

linda@craftystampin.com

CraftyStampin.com



Hey Sports Fan-Suite Collection (English) - 157896



Your Biggest Fan Bundle (English) - 157893



Your Biggest Fan Photopolymer Stamp Set (English) - 158060



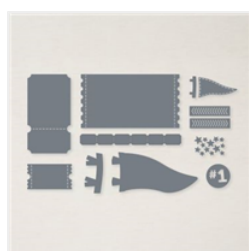
Very Vanilla 8-1/2" X 11" Thick Cardstock - 144237



Real Red 8-1/2" X 11" Cardstock - 102482



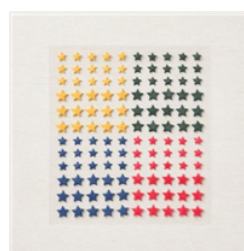
Hey Sports Fan 12" X 12" (30.5 X 30.5 Cm) Designer Series Paper - 157882



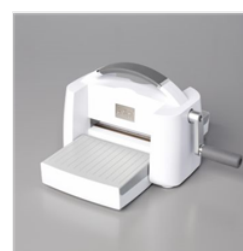
Sports Event Dies - 157892



Fan Bakers Twine - 158143



Resin Stars Embellishments - 158144



Stampin' Cut & Emboss Machine - 149653



Stampin' Dimensionals - 104430



Stampin' Seal+ - 149699

Add All to Cart