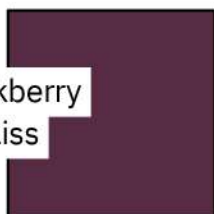
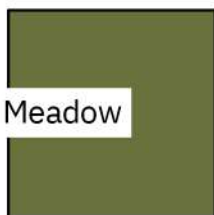


DECEMBER 25 PAPER PUMPKIN ALTERNATIVE CARD & BOX

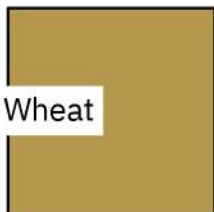
Blackberry
Bliss



Mossy Meadow



Wild Wheat



CUTS

- Blackberry Bliss – 4-1/4" x 11" card base score at 5-1/2" (or Basic White Thick)
- Blackberry Bliss – 4-1/4" x 4-1/4"
- Mossy Meadow – 1/2" x 4-1/4"
- Mossy Meadow – 1- 1/4" x 4-1/4"
- Wild Wheat – scrap for label
- Blackberry Bliss DSP – 1- 1/4" x 4-1/4"

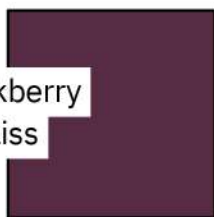
INSTRUCTIONS

- Cut, fold & score the card base. You can use Blackberry Bliss or Thick Basic White. If you use Blackberry Bliss you will need to cut a Basic White panel for the inner panel.
- Run the 4-1/4" x 4-1/4" Blackberry Bliss thru the Stampin' Cut & Emboss Machine with the Exposed Brick 3D Embossing Folder.
- Cut down the card base from the kit to get a 1/4" x 4 1/4" scallop edge.
- Using Seal to attach the Blackberry Bliss DSP panel, Mossy Meadow panel and Scallop edge together and to the bottom of the embossed 4-1/4" x 4-1/4" Blackberry Bliss panel.
- Attach the Mossy Meadow (1- 1/4" x 4-1/4") to the front bottom of the card base. Attach the embossed Blackberry Bliss panel the card base
- Wrap Wild Wheat Rustic Striped Ribbon around card base and tie off with Crumb Cake Twine.
- Stamp greeting in Blackberry Bliss Ink on Wild Wheat scrap panel. Die cut with largest label from Mixed Label Dies.
- Attach to the back of the blackberry vine die cut from the kit with Seal, and attach the card base with Dimensionals.
- Finish with the gems from the kit.

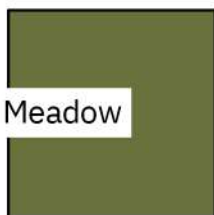


DECEMBER 25 PAPER PUMPKIN ALTERNATIVE CARD & BOX

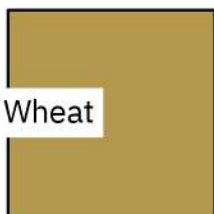
Blackberry Bliss



Mossy Meadow



Wild Wheat



Front



Back

CUTS

- Blackberry Bliss – 7-3/4" x 6"
- Blackberry Bliss – 1-1/2" x 4"
- Mossy Meadow – 1/2" x 4"
- Wild Wheat – scrap for leaf die cut
- Blackberry Bliss DSP – 3-1/2" x 4-3/4"

INSTRUCTIONS

- Cut and score the Blackberry bliss panel following included diagram.
- Die cut out half circle tab with circle die (or circle punch)
- Cut out sides/tabs.
- Attach side with Seal+ or liquid glue.
- Emboss Blackberry Bliss 1-1/2" x 4" panel with Exposed Brick 3D Embossing Folder.
- Cut down the card base from the kit to get a 1/4" x 4" scallop edge.
- Using Seal to attach the Blackberry Bliss DSP panel, Mossy Meadow panel and Scallop edge together and to the bottom of the embossed 1-1/2" x 4" Blackberry Bliss panel.
- Attach to the front panel of the box.
- Stamp greeting in Blackberry Bliss Ink on Wild Wheat scrap panel. Die cut with largest label from Mixed Label Dies.
- Cut the blackberry die-cut into 3 sections - use the box as a measurement too.
- Attach greeting die cut to front of the box with Seal.
- Attach the 3 parts of the die cut to the box with Dimensionals.
- Attach gems from kit to the box front.



DECEMBER 25 PAPER PUMPKIN ALTERNATIVE CARD & BOX

SUPPLIES



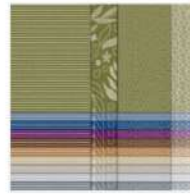
Blackberry Bliss 8-1/2" X 11" Cardstock - 133675



Mossy Meadow 8-1/2" X 11" Cardstock - 133676



Wild Wheat 8-1/2" X 11" Cardstock - 161725



Neutrals 6" X 6" (15.2 X 15.2 Cm) Designer Series Paper - 163773



Blackberry Bliss Classic Stampin' Pad - 147092



Mixed Labels Dies - 164652



Stylish Shapes Dies - 159183



Exposed Brick 3D Embossing Folder - 161600



Wild Wheat 3/8" (1 Cm) Rustic Striped Ribbon - 164061



Baker's Twine Essentials Pack - 155475



Simply Scored Scoring Tool - 122334



Paper Trimmer - 152392



Stampin' Cut & Emboss Machine - 149653



Bone Folder - 102300



Paper Snips Scissors - 103579



Take Your Pick - 144107



Stampin' Pierce Mat - 126199



Stampin' Dimensionals - 104430



Stampin' Seal+ - 149699



Stampin' Seal - 152813

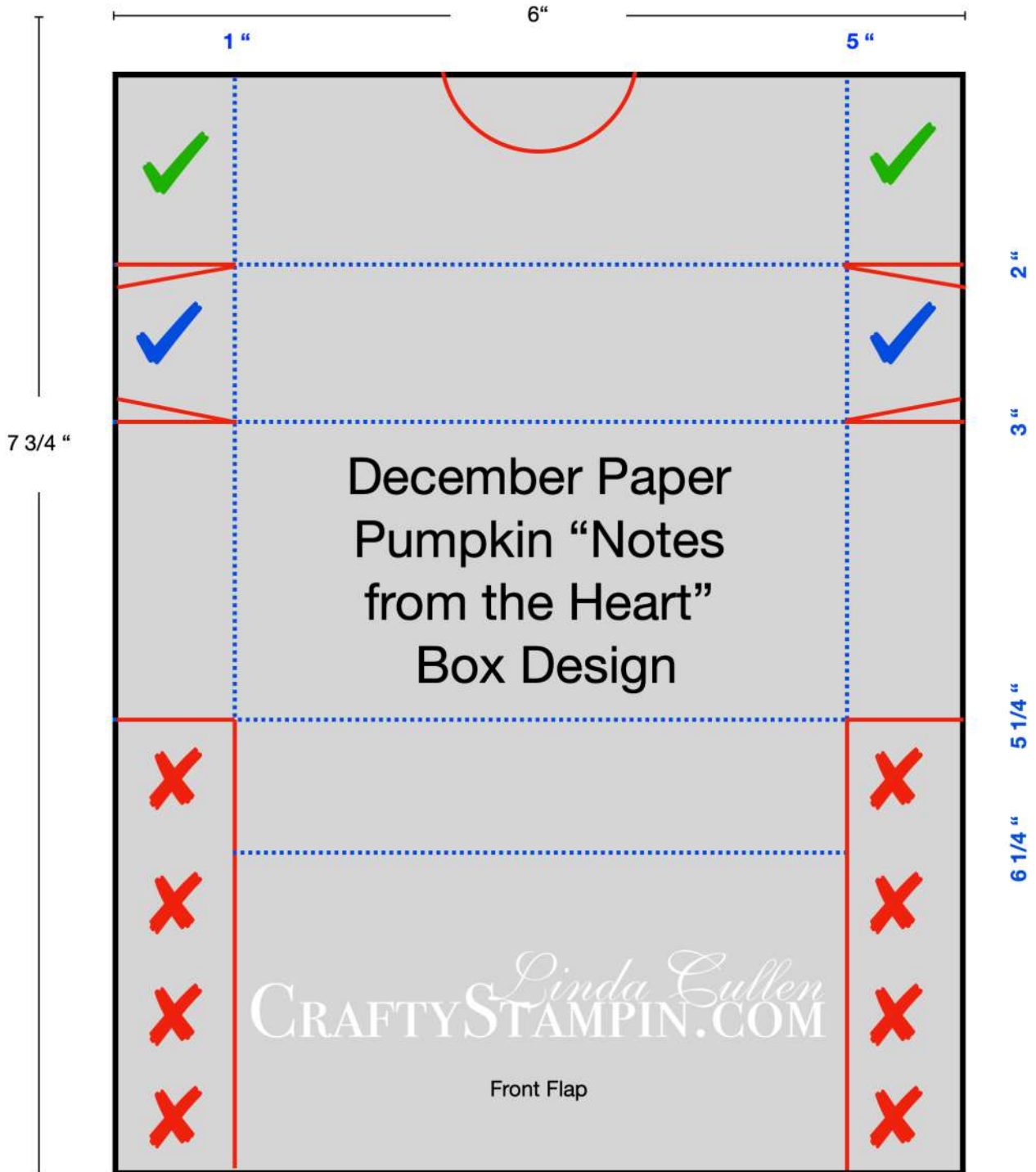


Stampin' Up! Products used in this tutorial may be purchased from me on my online store at CraftyStampin.com. Please contact me with any questions.



DECEMBER 25 PAPER PUMPKIN ALTERNATIVE CARD & BOX

SUPPLIES



Not Drawn to Scale



Stampin' Up! Products used in this tutorial may be purchased from me on my online store at
CraftyStampin.com. Please contact me with any questions.

